

1. Lemongrass oil

Content	Norm. Area (%)
Neral	27.36
Geraniol	2.89
Geranial	36.22

2. Palmarosa oil

Content	Norm. Area (%)
Geraniol	71.70
Geranyl acetate	10.14

3. Citronella oil

Content	Norm. Area (%)
Limonene	3.55
Citronellal	36.00
Citronellol	11.98
Geraniol	20.13
Citronellyl acetate	1.37
Geranyl acetate	1.65
β - elemene	3.41
ζ - cadinene	1.55
Elemol	6.67

4. Mentha arvensis oil

Content	Norm. Area (%)
Limonene	1.62
Menthone	2.24
Isomenthone	1.69
Menthyl acetate	12.09
Menthol	73.93

5. Geranium oil

Content	Norm. Area (%)
Linalool	10.70
Menthone	6.85
Isomenthone	4.41
Citronellal	36.95
Geraniol	9.19
Citronellyl formate	8.50
Geranyl formate	1.79
Phenyl ethyl tiglate	0.33
10 - epi - γ - eudesmol	3.17
Geranyl tiglate	0.65

 16/08/2012

```

ware Version      : 6.3.2.0646
rator            : manager
Sample Name      :
Study           :
Sample Number    :
Sampler         : NONE
Document Name   : ASXL
Document Serial # : None
Injection Time  : 0.00 min
Injection Rate   : 12.5000 pts/s
Injection Volume : 1.000000 ul
Injection Amount : 1.0000
Data Acquisition Time : 7/28/2017 1:22:56 PM

Date            : 7/31/2017 10:15:22 AM
Sample Name     :
Study          :
Rack/Vial      : 0/0
Channel        : A
A/D mV Range   : 1000
End Time       : 72.00 min

Area Reject    : 0.000000
Dilution Factor : 1.00
Cycle          : 1

```

```

Data File : C:\PenExe\TcWS\Ver6.3.2\Examples\cimap\data\JULY_2017\SS_LEMONGRASS_28072017_.raw
Output File : C:\PenExe\TcWS\Ver6.3.2\Examples\cimap\data\JULY_2017\SS_LEMONGRASS_28072017_.rst [Editing in Progress]
Method : C:\PenExe\TcWS\Ver6.3.2\Examples\cimap\Method\EQUITY_5_EO70_100815 from
PenExe\TcWS\Ver6.3.2\Examples\cimap\data\JULY_2017\SS_LEMONGRASS_28072017_.raw
Method : C:\PenExe\TcWS\Ver6.3.2\Examples\cimap\Method\EQUITY_5_EO70_100815 from
PenExe\TcWS\Ver6.3.2\Examples\cimap\data\JULY_2017\SS_LEMONGRASS_28072017_.rst [Editing in Progress]
Method : C:\PenExe\TcWS\Ver6.3.2\Examples\cimap\Method\EQUITY_5_EO70_100815 from
PenExe\TcWS\Ver6.3.2\Examples\cimap\data\JULY_2017\SS_LEMONGRASS_28072017_.rst [Editing in Progress]
Report Format File : C:\PenExe\TcWS\Ver6.3.2\Examples\cimap\Method\EQUITY_5_EO70_100815.rpt
Source File : C:\PenExe\TcWS\Ver6.3.2\Examples\SS_LEMONGRASS_28072017-20170728-132006.seq

```

DEFAULT REPORT

pk	Time [min]	Area [μV·s]	Height [μV]	Area [%]	Norm. Area [%]	BL	Area/Height [s]
1	4.659	163.34	102.84	0.01	0.01	BB	1.5883
2	5.197	172.17	101.15	0.02	0.02	BB	1.7021
3	5.420	1694.39	787.60	0.15	0.15	BB	2.1513
4	5.519	125.31	76.53	0.01	0.01	BB	1.6373
5	5.795	412.61	229.67	0.04	0.04	BB	1.7966
6	6.082	1064.18	555.73	0.10	0.10	BB	1.9149
7	6.221	85.13	69.19	0.01	0.01	BV	1.2304
8	6.248	253.02	135.58	0.02	0.02	VB	1.8662
9	6.493	1823.15	941.92	0.17	0.17	BB	1.9356
0	7.193	359.67	179.23	0.03	0.03	BB	2.0068
1	7.587	1571.76	782.32	0.14	0.14	BB	2.0091
2	7.705	148.22	76.32	0.01	0.01	BB	1.9421
3	7.871	5107.01	2394.85	0.46	0.46	BB	2.1325
4	8.320	9639.86	4141.87	0.87	0.87	BB	2.3274
5	9.022	191.79	100.32	0.02	0.02	BB	1.9118
6	9.175	843.83	394.96	0.08	0.08	BB	2.1365
7	9.271	39622.86	15946.32	3.59	3.59	BV	2.4848
8	9.438	18569.59	7040.73	1.68	1.68	VV	2.6375
9	9.580	1651.79	435.05	0.15	0.15	VB	3.7968
0	9.917	217.97	105.38	0.02	0.02	BB	2.0684
1	10.049	426.71	173.43	0.04	0.04	BB	2.4604
2	10.710	1765.76	606.94	0.16	0.16	BB	2.9093
3	10.885	37600.73	14362.21	3.41	3.41	BV	2.6180
4	11.079	12016.66	3844.74	1.09	1.09	VB	3.1255
5	11.500	7845.26	2887.10	0.71	0.71	BB	2.7174
6	11.762	408.97	155.23	0.04	0.04	BB	2.6346
7	12.025	99.88	56.83	0.01	0.01	BB	1.7575
8	12.424	4483.82	1502.18	0.41	0.41	BB	2.9849
9	13.227	488.05	214.22	0.04	0.04	BB	2.2783
0	13.460	1382.76	566.41	0.13	0.13	BB	2.4413
1	13.638	18289.57	5032.43	1.66	1.66	BB	3.6343
2	13.916	721.83	243.48	0.07	0.07	BB	2.9646
3	14.695	203.68	91.92	0.02	0.02	BB	2.2158
4	14.823	1527.71	552.69	0.14	0.14	BB	2.7641
5	15.369	1354.39	437.74	0.12	0.12	BB	3.0940
6	15.493	4686.73	1545.23	0.42	0.42	BB	3.0330
7	15.840	5991.75	1424.69	0.54	0.54	BB	4.2057
8	16.325	10579.44	3284.90	0.96	0.96	BB	3.2206
9	16.714	296.15	110.95	0.03	0.03	BV	2.6692
0	16.775	513.60	148.49	0.05	0.05	VV	3.4589
1	16.875	774.68	286.95	0.07	0.07	VB	2.6997

7/31/2017, 10:15:22 AM Result:

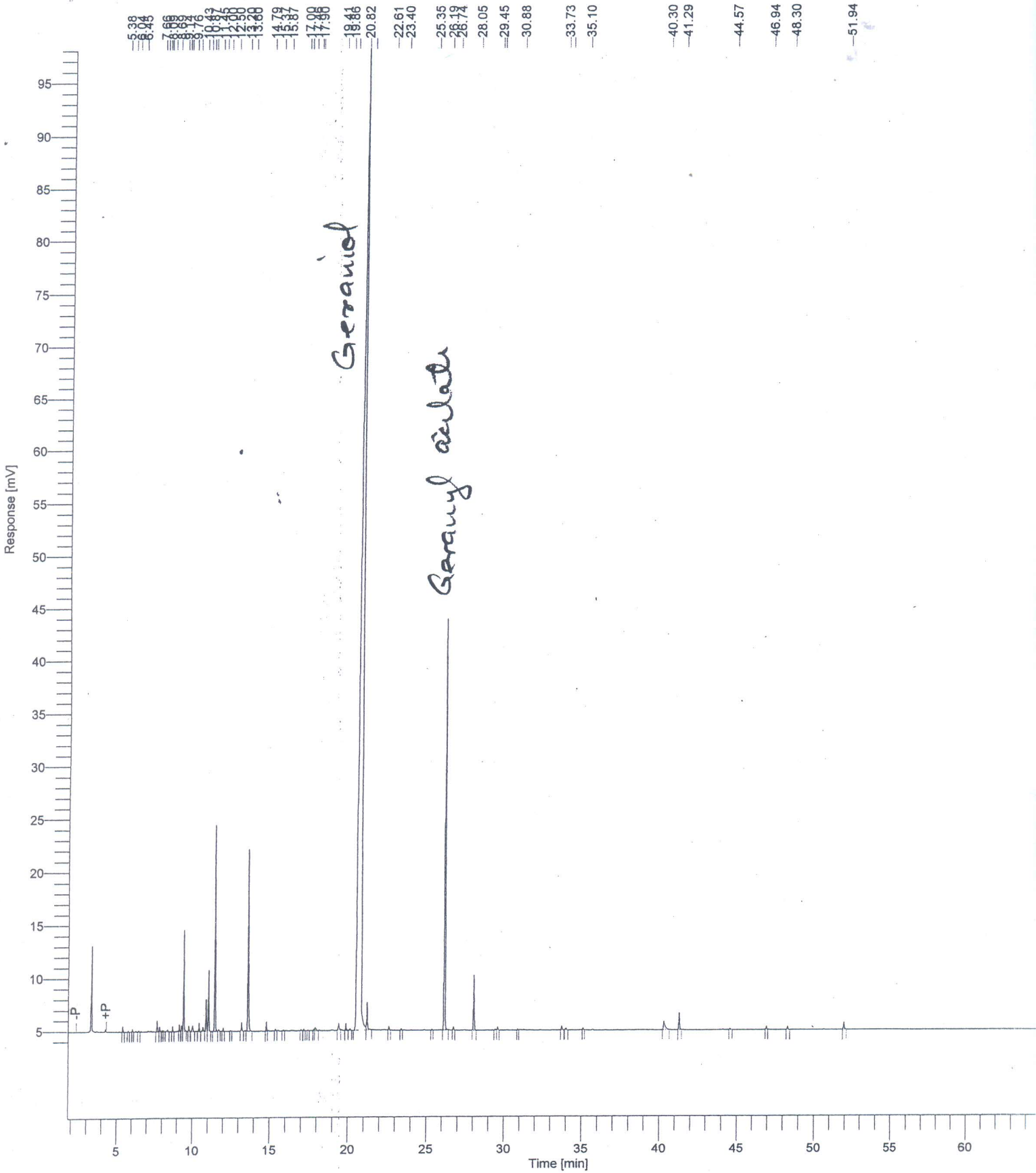
C:\PenExe\TcWS\Ver6.3.2\Examples\cimap\data\JULY_2017\SS_LEMONGRASS_28072017_.rst

Peak #	Time [min]	Area [μ V·s]	Height [μ V]	Area [%]	Norm. Area [%]	BL	Area/Height [s]
42	17.120	20564.42	5712.49	1.86	1.86	BE	3.5999
43	17.230	1644.81	552.95	0.15	0.15	EB	2.9746
44	17.771	2096.13	462.28	0.19	0.19	BB	4.5343
45	18.166	421.25	182.78	0.04	0.04	BB	2.3047
46	18.469	878.43	280.09	0.08	0.08	BB	3.1362
47	18.960	108.45	55.43	0.01	0.01	BV	1.9566
48	19.049	729.59	158.48	0.07	0.07	VB	4.6038
49	19.352	5333.36	1223.79	0.48	0.48	BB	4.3581
50	19.586	333.08	111.07	0.03	0.03	BB	2.9989
51	19.926	301912.07	52917.95	27.36	27.36	BV	5.7053
52	20.050	1405.98	339.79	0.13	0.13	VB	4.1379
53	20.542	31874.18	7702.70	2.89	2.89	BB	4.1381
54	21.279	399629.19	60819.49	36.22	36.22	BB	6.5707
55	21.709	368.50	124.16	0.03	0.03	BB	2.9679
56	22.145	1275.00	392.18	0.12	0.12	BB	3.2510
57	22.610	257.33	92.31	0.02	0.02	BB	2.7876
58	23.881	298.66	105.52	0.03	0.03	BB	2.8304
59	24.299	71.97	33.19	0.01	0.01	BB	2.1681
60	24.814	61.90	21.79	0.01	0.01	BB	2.8414
61	25.305	2330.27	466.15	0.21	0.21	BB	4.9990
62	25.701	345.43	135.50	0.03	0.03	BB	2.5492
63	25.861	461.36	136.94	0.04	0.04	BB	3.3692
64	26.108	42311.22	12038.95	3.83	3.83	BB	3.5145
65	26.654	765.41	324.44	0.07	0.07	BV	2.3591
66	26.700	1658.82	513.08	0.15	0.15	VB	3.2330
67	27.097	38451.05	11261.06	3.48	3.48	BB	3.4145
68	27.318	513.86	155.49	0.05	0.05	BB	3.3047
69	28.015	13391.47	3615.77	1.21	1.21	BB	3.7036
70	28.592	4456.74	1311.72	0.40	0.40	BB	3.3976
71	28.897	618.98	192.60	0.06	0.06	BB	3.2138
72	29.530	1329.46	401.69	0.12	0.12	BB	3.3097
73	30.304	469.94	160.22	0.04	0.04	BV	2.9331
74	30.423	1283.67	391.46	0.12	0.12	VB	3.2791
75	30.678	554.26	190.98	0.05	0.05	BB	2.9022
76	30.950	2786.31	759.19	0.25	0.25	BV	3.6701
77	31.133	9039.97	2121.96	0.82	0.82	VV	4.2602
78	31.318	1391.82	363.18	0.13	0.13	VV	3.8323
79	31.437	1048.98	282.02	0.10	0.10	VB	3.7195
80	31.720	243.41	92.53	0.02	0.02	BB	2.6307
81	32.022	2194.67	652.58	0.20	0.20	BB	3.3630
82	32.174	1457.29	395.27	0.13	0.13	BB	3.6868
83	32.353	5108.09	1433.93	0.46	0.46	BB	3.5623
84	33.554	89.76	26.33	0.01	0.01	BB	3.4089
85	35.023	5080.48	1350.96	0.46	0.46	BB	3.7606
86	35.266	210.12	75.79	0.02	0.02	BB	2.7723
87	36.118	380.32	120.33	0.03	0.03	BB	3.1605
88	36.514	62.43	28.66	0.01	0.01	BB	2.1781
89	33.812	666.03	202.27	0.06	0.06	BB	3.2927
90	37.378	290.28	103.50	0.03	0.03	BB	2.8045
		1103432.03	242719.35	100.00	100.00		

Missing Component Report
Component Expected Retention (Calibration File)

All components were found

Sample Name : File Name : C:\PenExe\TcWS\Ver6.3.2\Examples\cimap\data\JULY_2017\SS_PALMAROSA_28072017_ raw
 Date : 7/28/2017 2:40:43 PM
 Method : Time of Injection: 7/28/2017 10:37:44 AM
 Start Time : 1.81 min End Time : 65.34 min Low Point : 3.19 mV High Point : 98.03 mV
 Plot Offset: 3.19 mV Plot Scale: 94.8 mV




```

Software Version      : 6.3.2.0646
Operator             : manager
Sample Number        :
Injection Sampler     : NONE
Instrument Name       : ASXL
Instrument Serial #   : None
Injection Time       : 0.00 min
Sampling Rate        : 12.5000 pts/s
Injection Volume     : 1.000000 ul
Injection Amount     : 1.0000
Data Acquisition Time : 7/28/2017 10:37:44 AM

Date                 : 7/28/2017 2:41:01 PM
Sample Name          :
Study                :
Rack/Vial            : 0/0
Channel              : A
AVD mV Range        : 1000
End Time             : 72.00 min

Area Reject          : 0.000000
Dilution Factor     : 1.00
Cycle                : 1

```

```

Raw Data File : C:\PenExe\TcWS\Ver6.3.2\Examples\cimap\data\JULY_2017\SS_PALMAROSA_28072017_.raw
Result File : C:\PenExe\TcWS\Ver6.3.2\Examples\cimap\data\JULY_2017\SS_PALMAROSA_28072017_.rst [Editing in Progress]
Injection Method : C:\PenExe\TcWS\Ver6.3.2\Examples\cimap\Method\EQUITY_5_EO70_100815 from
Injection Volume : C:\PenExe\TcWS\Ver6.3.2\Examples\cimap\data\JULY_2017\SS_PALMAROSA_28072017_.raw
Injection Amount : C:\PenExe\TcWS\Ver6.3.2\Examples\cimap\Method\EQUITY_5_EO70_100815 from
Injection Time : C:\PenExe\TcWS\Ver6.3.2\Examples\cimap\data\JULY_2017\SS_PALMAROSA_28072017_.rst [Editing in Progress]
Injection Method : C:\PenExe\TcWS\Ver6.3.2\Examples\cimap\Method\EQUITY_5_EO70_100815 from
Injection Volume : C:\PenExe\TcWS\Ver6.3.2\Examples\cimap\data\JULY_2017\SS_PALMAROSA_28072017_.rst [Editing in Progress]
Injection Amount : C:\PenExe\TcWS\Ver6.3.2\Examples\cimap\Method\EQUITY_5_EO70_100815.rpt
Injection Sequence File : C:\PenExe\TcWS\Ver6.3.2\Examples\SS_PALMAROSA_28072017.seq

```

DEFAULT REPORT

Peak #	Time [min]	Area [$\mu\text{V}\cdot\text{s}$]	Height [μV]	Area [%]	Norm. Area [%]	BL	Area/Height [s]
1	5.383	1747.22	527.23	0.11	0.11	BB	3.3140
2	5.756	334.92	123.93	0.02	0.02	BB	2.7025
3	6.041	676.30	254.04	0.04	0.04	BB	2.6621
4	6.454	460.94	137.67	0.03	0.03	BB	3.3480
5	7.661	3480.20	1040.93	0.22	0.22	BV	3.3434
6	7.837	1208.64	440.79	0.08	0.08	VB	2.7420
7	8.003	445.74	153.84	0.03	0.03	BV	2.8975
8	8.094	368.27	133.43	0.02	0.02	VB	2.7601
9	8.356	1018.14	210.83	0.06	0.06	BB	4.8292
10	8.691	1455.58	489.82	0.09	0.09	BB	2.9717
11	9.142	1666.18	643.26	0.11	0.11	BB	2.5902
12	9.299	1732.02	546.04	0.11	0.11	BV	3.1720
13	9.420	30424.04	9550.06	1.92	1.92	VB	3.1857
14	9.758	1739.45	525.96	0.11	0.11	BB	3.3072
15	10.010	2535.22	549.98	0.16	0.16	BB	4.6097
16	10.430	2461.31	787.62	0.16	0.16	BB	3.1250
17	10.677	1555.80	408.22	0.10	0.10	BV	3.8112
18	10.870	10688.66	3029.10	0.68	0.68	VV	3.5287
19	11.040	18869.39	5797.72	1.19	1.19	VB	3.2546
20	11.450	66990.06	19462.61	4.24	4.24	BV	3.4420
21	11.705	628.09	155.55	0.04	0.04	VB	4.0379
22	12.000	1166.98	335.47	0.07	0.07	BB	3.4787
23	12.501	273.33	81.87	0.02	0.02	BB	3.3387
24	13.196	2444.50	779.32	0.15	0.15	BB	3.1367
25	13.604	63502.73	17126.51	4.02	4.02	BB	3.7079
26	14.795	2886.19	873.71	0.18	0.18	BB	3.3034
27	15.374	653.12	186.25	0.04	0.04	BB	3.5067
28	15.871	301.43	87.54	0.02	0.02	BB	3.4432
29	17.000	436.67	126.05	0.03	0.03	BB	3.4642
30	17.179	548.84	164.05	0.03	0.03	BB	3.3456
31	17.458	269.55	75.10	0.02	0.02	BB	3.5891
32	17.802	475.02	147.71	0.03	0.03	BV	3.2160
33	17.898	1757.49	290.59	0.11	0.11	VB	6.0480
34	19.412	2779.03	641.37	0.18	0.18	BB	4.3329
35	19.864	2374.87	672.88	0.15	0.15	BB	3.5294
36	20.142	907.45	195.40	0.06	0.06	BB	4.6441
37	20.823	1133869.85	96505.83	71.70	71.70	BV	11.7492
38	21.209	9893.18	2586.81	0.63	0.63	VB	3.8245
39	22.605	1207.87	351.25	0.08	0.08	BB	3.4387
40	23.405	529.30	155.95	0.03	0.03	BB	3.3940
41	25.345	324.41	104.63	0.02	0.02	BB	3.1007

7/28/2017 2:41:01 PM Result:

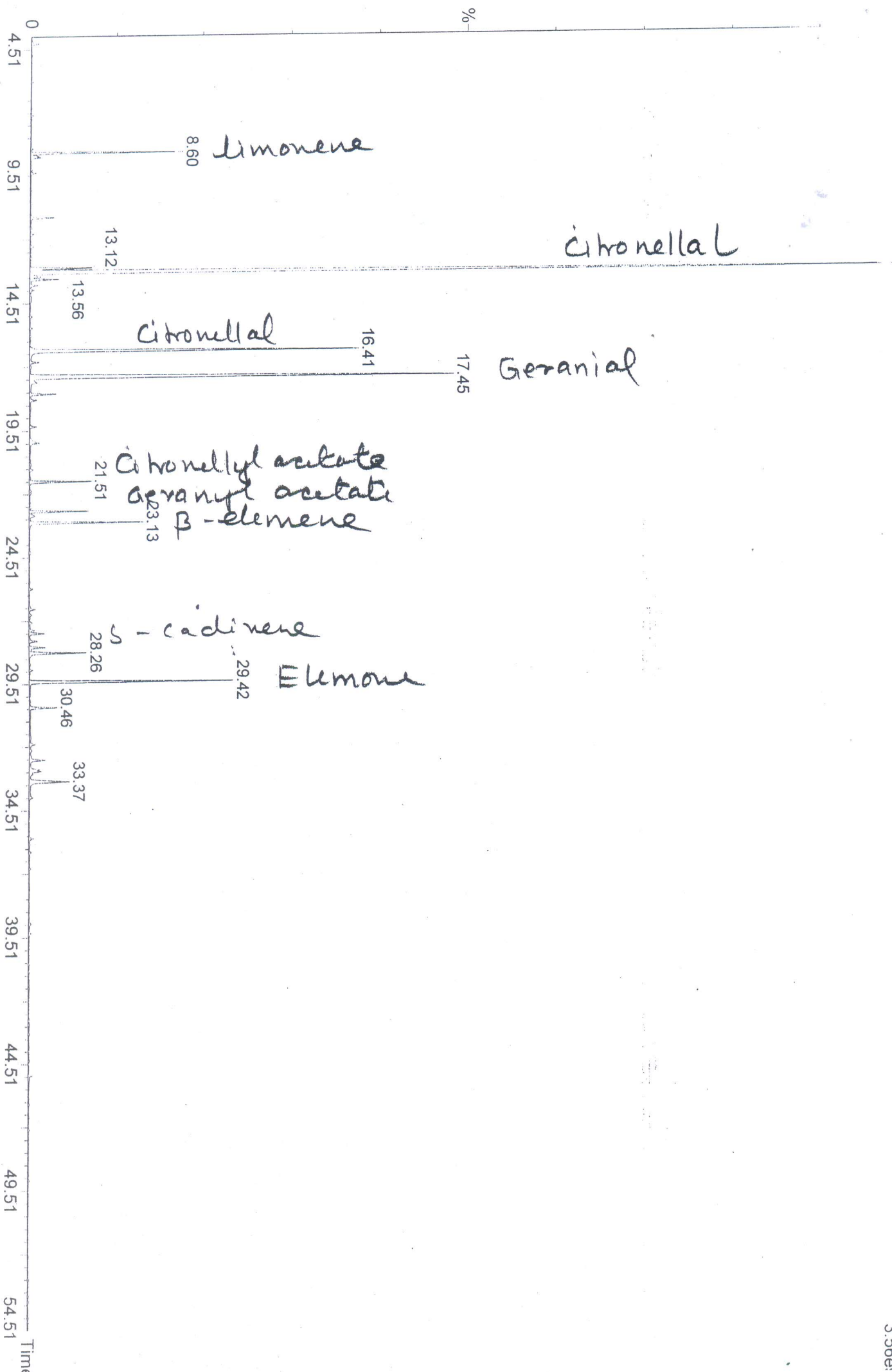
C:\PenExe\TcWS\Ver6.3.2\Examples\cimap\data\JULY_2017\SS_PALMAROSA_28072017_.rst

Peak #	Time [min]	Area [$\mu\text{V}\cdot\text{s}$]	Height [μV]	Area [%]	Norm. Area [%]	BL	Area/Height [s]
42	26.190	160368.43	38979.51	10.14	10.14	BB	4.1142
43	26.741	971.29	312.29	0.06	0.06	BB	3.1103
44	28.046	19967.70	5218.89	1.26	1.26	BB	3.8260
45	29.446	309.48	85.04	0.02	0.02	BV	3.6394
46	29.598	1116.24	297.86	0.07	0.07	VB	3.7475
47	30.876	457.74	126.04	0.03	0.03	BB	3.6317
48	33.728	1613.86	407.30	0.10	0.10	BB	3.9624
49	34.013	792.87	183.51	0.05	0.05	BB	4.3205
50	35.103	740.05	201.24	0.05	0.05	BB	3.6775
51	40.300	6155.98	812.17	0.39	0.39	BB	7.5797
52	41.286	6388.05	1618.69	0.40	0.40	BB	3.9464
53	44.565	573.45	134.24	0.04	0.04	BB	4.2719
54	46.945	1018.82	296.14	0.06	0.06	BB	3.4404
55	48.300	1173.32	293.72	0.07	0.07	BB	3.9947
56	51.942	2706.59	668.41	0.17	0.17	BB	4.0493
		1581441.88	216091.94	100.00	100.00		

Missing Component Report

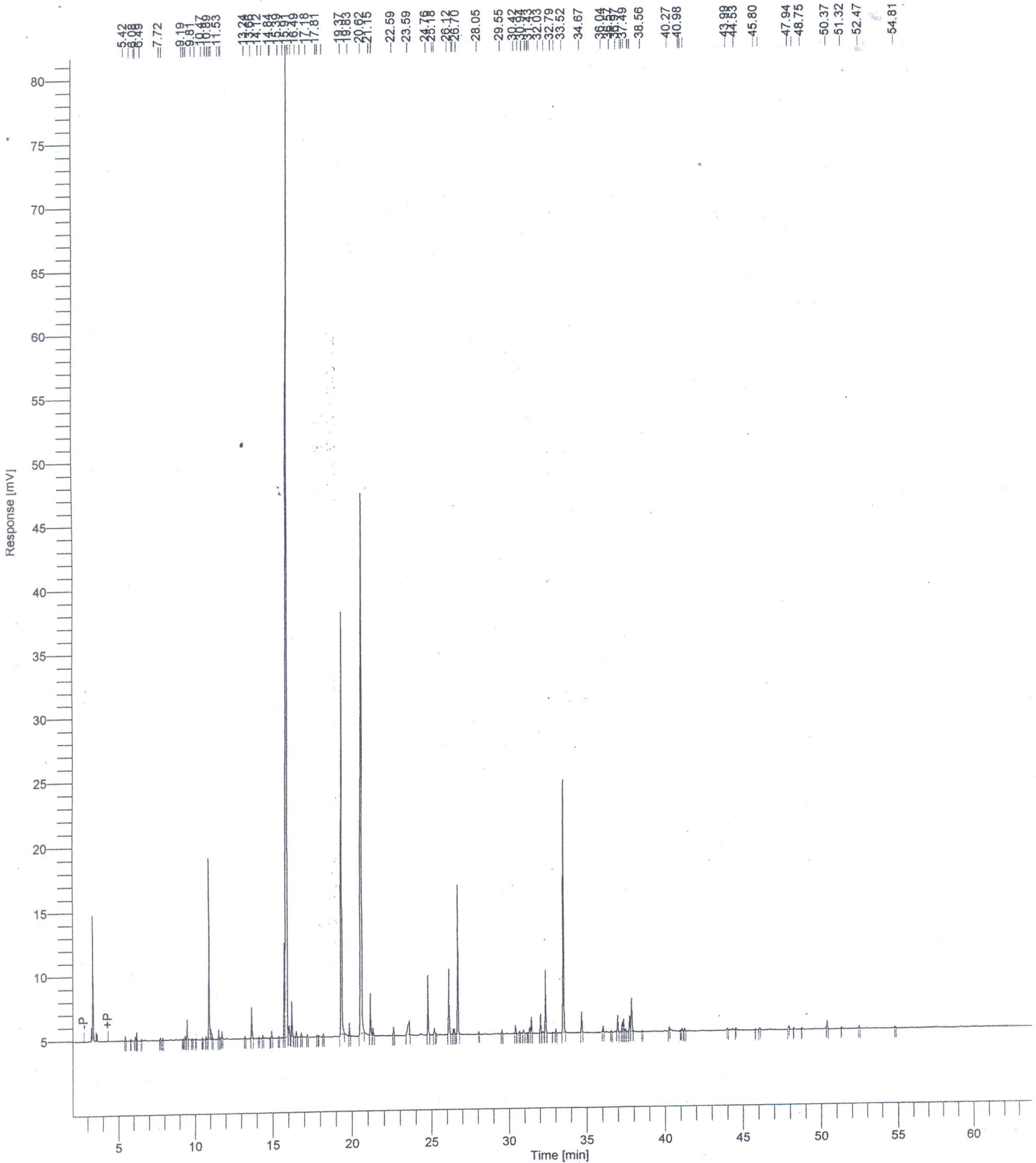
Component Expected Retention (Calibration File)

All components were found



Chromatogram

Name: Sample #: Page 1 of 1
Path: C:\PenExe\TcWS\Ver6.3.2\Examples\cimap\data\JULY_2017\SS_CITRONELLA_27072017_raw
Date: 7/28/2017 11:02:46 AM
Time of Injection: 7/27/2017 2:49:01 PM
Start Time: 2.04 min End Time: 64.43 min Low Point: 4.47 mV High Point: 81.70 mV
Plot Offset: 4.47 mV Plot Scale: 77.2 mV



Software Version	: 6.3.2.0646	Date	: 7/28/2017 11:03:41 AM
Operator	: manager	Sample Name	:
Sample Number	:	Study	:
AutoSampler	: NONE	Rack/Vial	: 0/0
Instrument Name	: ASXL	Channel	: A
Instrument Serial #	: None	AVD mV Range	: 1000
Delay Time	: 0.00 min	End Time	: 72.00 min
Sampling Rate	: 12.5000 pts/s		
Sample Volume	: 1.000000 ul	Area Reject	: 0.000000
Sample Amount	: 1.0000	Dilution Factor	: 1.00
Data Acquisition Time	: 7/27/2017 2:49:01 PM	Cycle	: 1

Raw Data File : C:\PenExe\TcWS\Ver6.3.2\Examples\cimap\data\JULY_2017\SS_CITRONELLA_27072017_.raw
 Result File : C:\PenExe\TcWS\Ver6.3.2\Examples\cimap\data\JULY_2017\SS_CITRONELLA_27072017_.rst [Editing in Progress]
 Inst Method : C:\PenExe\TcWS\Ver6.3.2\Examples\cimap\Method\EQUITY_5_EO70_100815 from
 C:\PenExe\TcWS\Ver6.3.2\Examples\cimap\data\JULY_2017\SS_CITRONELLA_27072017_.raw
 Proc Method : C:\PenExe\TcWS\Ver6.3.2\Examples\cimap\Method\EQUITY_5_EO70_100815 from
 C:\PenExe\TcWS\Ver6.3.2\Examples\cimap\data\JULY_2017\SS_CITRONELLA_27072017_.rst [Editing in Progress]
 Calib Method : C:\PenExe\TcWS\Ver6.3.2\Examples\cimap\Method\EQUITY_5_EO70_100815 from
 C:\PenExe\TcWS\Ver6.3.2\Examples\cimap\data\JULY_2017\SS_CITRONELLA_27072017_.rst [Editing in Progress]
 Report Format File: C:\PenExe\TcWS\Ver6.3.2\Examples\cimap\Method\EQUITY_5_EO70_100815.rpt
 Sequence File : C:\PenExe\TcWS\Ver6.3.2\Examples\SS_CITRONELLA_27072017_.seq

DEFAULT REPORT

Peak #	Time [min]	Area [$\mu\text{V}\cdot\text{s}$]	Height [μV]	Area [%]	Norm. Area [%]	BL	Area/Height [s]
1	5.416	947.55	400.99	0.08	0.08	BB	2.3630
2	5.788	157.15	100.07	0.01	0.01	BB	1.5704
3	6.075	690.26	352.66	0.06	0.06	BB	1.9573
4	6.158	789.96	522.59	0.07	0.07	BV	1.5116
5	6.188	1307.26	668.00	0.11	0.11	VB	1.9570
6	6.492	255.63	130.63	0.02	0.02	BB	1.9569
7	7.717	564.07	203.11	0.05	0.05	BB	2.7772
8	7.884	367.95	172.63	0.03	0.03	BB	2.1315
9	9.194	162.42	89.42	0.01	0.01	BB	1.8165
10	9.340	813.09	309.34	0.07	0.07	BB	2.6285
11	9.474	4006.38	1554.14	0.35	0.35	BB	2.5779
12	9.809	236.69	99.27	0.02	0.02	BB	2.3843
13	10.060	274.66	106.26	0.02	0.02	BB	2.5849
14	10.471	250.35	133.01	0.02	0.02	BB	1.8822
15	10.713	556.97	242.48	0.05	0.05	BB	2.2970
16	10.888	40824.20	14119.90	3.55	3.55	BE	2.8913
17	11.023	3024.47	775.94	0.26	0.26	EV	3.8978
18	11.106	1319.93	434.96	0.11	0.11	VB	3.0346
19	11.527	1929.02	729.53	0.17	0.17	BB	2.6442
20	11.679	227.33	112.71	0.02	0.02	BV	2.0170
21	11.747	1630.23	574.59	0.14	0.14	VB	2.8372
22	13.238	542.22	192.52	0.05	0.05	BB	2.8165
23	13.656	8429.31	2442.41	0.73	0.73	BB	3.4512
24	14.125	205.59	97.98	0.02	0.02	BB	2.0983
25	14.365	807.06	268.01	0.07	0.07	BB	3.0113
26	14.844	66.89	38.54	0.01	0.01	BB	1.7356
27	14.927	1279.26	506.51	0.11	0.11	BB	2.5257
28	15.388	387.57	138.29	0.03	0.03	BB	2.8025
29	15.716	21145.98	7417.15	1.84	1.84	BV	2.8510
30	15.914	413991.38	76688.84	36.00	36.00	VV	5.3983
31	16.033	3254.37	789.40	0.28	0.28	VB	4.1226
32	16.203	8394.72	2730.48	0.73	0.73	BB	3.0744
33	16.494	1603.50	469.07	0.14	0.14	BB	3.4184
34	16.798	1002.69	336.17	0.09	0.09	BB	2.9827
35	17.181	690.13	207.04	0.06	0.06	BB	3.3333
36	17.805	387.85	153.39	0.03	0.03	BB	2.5285
37	17.911	47.55	31.37	0.00	0.00	BB	1.5155
38	18.185	634.04	245.41	0.06	0.06	BB	2.5837
39	19.365	137745.92	32904.58	11.98	11.98	BB	4.1862
40	19.835	3182.34	1000.09	0.28	0.28	BB	3.1821
41	20.620	231573.55	42126.70	20.13	20.13	BB	5.4971

2017 11:03:41 AM Result:
 A:\PenExe\TcWS\Ver6.3.2\Examples\cimap\data\JULY_2017\SS_CITRONELLA_27072017_.rst

Peak #	Time [min]	Area [$\mu\text{V}\cdot\text{s}$]	Height [μV]	Area [%]	Norm. Area [%]	BL	Area/Height [s]
42	21.147	10700.82	3252.14	0.93	0.93	BV	3.2904
43	21.316	1911.77	568.28	0.17	0.17	VB	3.3641
44	22.589	1970.47	612.77	0.17	0.17	BB	3.2157
45	23.592	7916.60	1054.74	0.69	0.69	BB	7.5057
46	24.763	15721.62	4627.26	1.37	1.37	BB	3.3976
47	25.182	1902.75	525.86	0.17	0.17	BV	3.6183
48	25.287	231.42	96.78	0.02	0.02	VB	2.3913
49	26.121	18945.32	5089.33	1.65	1.65	BB	3.7226
50	26.405	1326.36	422.38	0.12	0.12	BV	3.1402
51	26.483	1326.31	444.67	0.12	0.12	VB	2.9827
52	26.700	39214.27	11644.06	3.41	3.41	BB	3.3677
53	28.055	206.87	101.74	0.02	0.02	BB	2.0332
54	29.549	1054.91	295.27	0.09	0.09	BB	3.5727
55	30.420	2183.96	644.79	0.19	0.19	BB	3.3871
56	30.683	485.91	176.68	0.04	0.04	BB	2.7502
57	30.939	945.21	278.80	0.08	0.08	BB	3.3903
58	31.173	105.24	50.07	0.01	0.01	BB	2.1018
59	31.319	1587.34	444.79	0.14	0.14	BV	3.5687
60	31.427	4255.34	1241.31	0.37	0.37	VB	3.4281
61	32.027	5158.49	1507.83	0.45	0.45	BB	3.4211
62	32.349	17809.71	4922.61	1.55	1.55	BB	3.6179
63	32.793	70.65	34.01	0.01	0.01	BB	2.0773
64	33.023	1012.66	304.02	0.09	0.09	BB	3.3309
65	33.521	76687.89	19631.64	6.67	6.67	BB	3.9063
66	34.671	6148.85	1574.89	0.53	0.53	BB	3.9043
67	36.043	1331.31	427.48	0.12	0.12	BB	3.1143
68	36.571	477.00	136.18	0.04	0.04	BB	3.5028
69	36.972	4547.32	1259.34	0.40	0.40	BB	3.6109
70	37.265	2740.34	800.41	0.24	0.24	BV	3.4237
71	37.344	3514.03	996.15	0.31	0.31	VV	3.5276
72	37.487	808.03	221.25	0.07	0.07	VB	3.6522
73	37.729	4542.65	1232.10	0.39	0.39	BV	3.6869
74	37.855	11483.49	2591.07	1.00	1.00	VB	4.4319
75	38.562	144.84	50.55	0.01	0.01	BB	2.8655
76	40.267	637.33	207.61	0.06	0.06	BB	3.0699
77	40.978	41.87	20.13	0.00	0.00	BB	2.0803
78	41.089	673.77	200.28	0.06	0.06	BB	3.3641
79	41.264	766.64	215.68	0.07	0.07	BB	3.5545
80	43.992	265.37	111.53	0.02	0.02	BB	2.3794
81	44.529	79.02	24.64	0.01	0.01	BB	3.2068
82	45.796	23.67	15.68	0.00	0.00	BB	1.5095
83	46.073	348.58	106.08	0.03	0.03	BB	3.2860
84	47.936	100.76	29.53	0.01	0.01	BB	3.4126
85	48.235	62.05	40.53	0.01	0.01	BB	1.5311
86	48.752	48.09	25.26	0.00	0.00	BB	1.9038
87	50.374	1865.52	562.03	0.16	0.16	BB	3.3193
88	51.319	75.71	27.29	0.01	0.01	BB	2.7745
89	52.471	682.41	204.99	0.06	0.06	BB	3.3290
90	54.812	280.78	109.33	0.02	0.02	BB	2.5683
		1150128.83	259777.97	100.00	100.00		

Missing Component Report
 Component Expected Retention (Calibration File)

All components were found

Title :
 Run File : c:\star\data\june 2017_continued\july_2017\ss_mentha_arvensis_.run
 Method File : ss_mentha_arvensis_-middle.mth
 Sample ID : SS_MENTHA_ARVENSIS_

Injection Date: 7/27/2017 12:08 PM Calculation Date: 1/4/1980 12:43 AM

Operator :
 Workstation:
 Instrument : Varian Star #1
 Channel : Middle = FID

Detector Type: 3800 (1 Volt)
 Bus Address : 44
 Sample Rate : 10.00 Hz
 Run Time : 68.260 min

** GC Workstation Multi Instrument Version 6.20 ** 02084-6798-928-2264 **

Run Mode : Analysis
 Peak Measurement: Peak Area
 Calculation Type: Percent

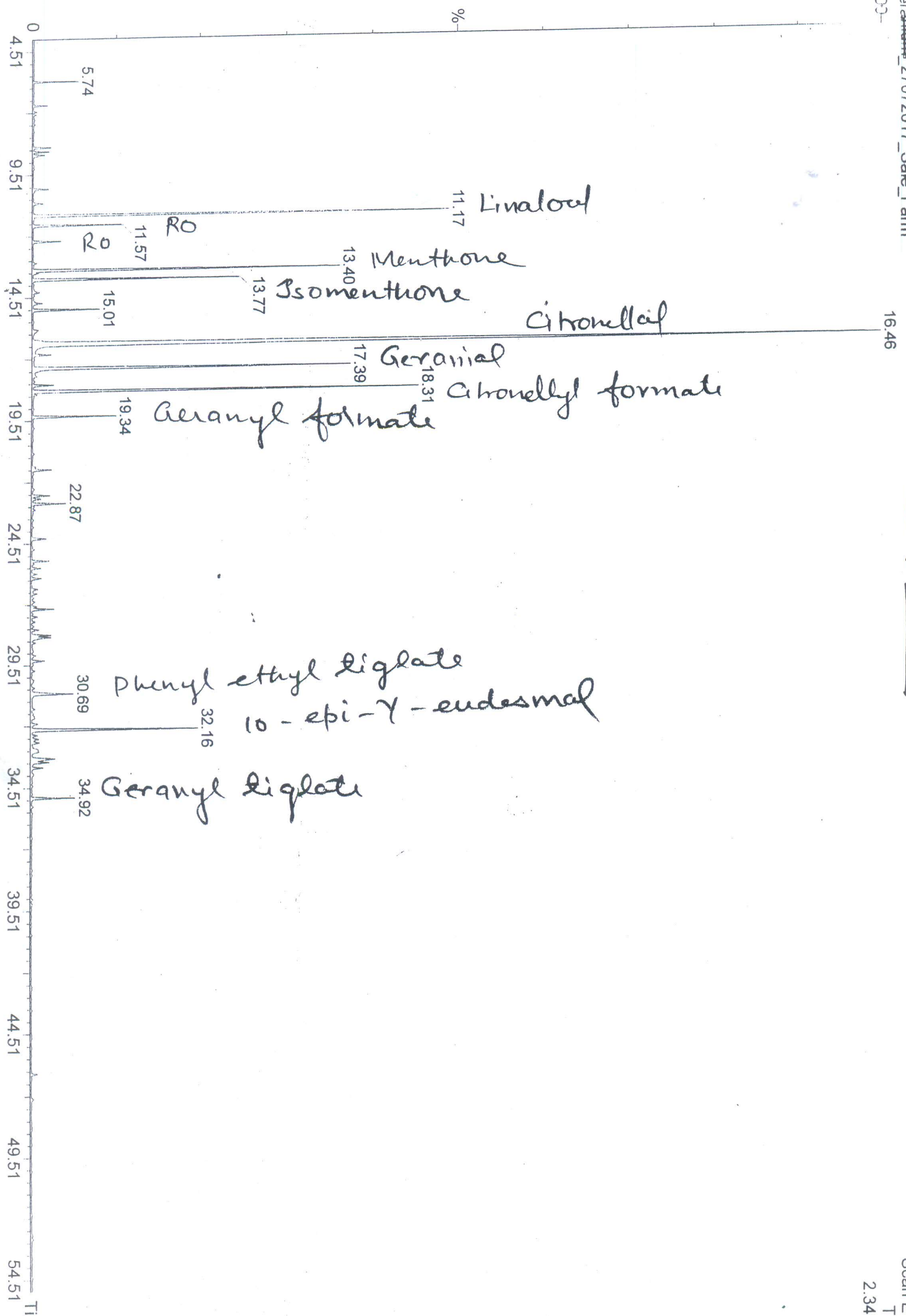
Peak No.	Peak Name	Result ()	Ret. Time (min)	Time Offset (min)	Area (counts)	Sep. Code	Width 1/2 (sec)	Status Codes
1		0.6764	2.451	0.000	14083	BB	1.3	
2		0.0207	2.725	0.000	431	BB	1.3	
3		0.0167	2.978	0.000	348	BB	1.6	
4		0.6498	3.613	0.000	13530	BB	1.8	
5		0.4281	4.929	0.000	8914	BB	2.1	
6		0.0496	5.147	0.000	1033	BB	2.1	
7		1.6286	5.614	0.000	33908	BB	2.2	
8		0.0874	5.779	0.000	1819	TS	0.0	
9		0.0350	6.821	0.000	729	BV	2.5	
10		0.0685	6.927	0.000	1426	VB	2.5	
11		0.0278	7.297	0.000	580	BB	2.5	
12		0.0189	7.695	0.000	393	BB	2.7	
13		0.0347	8.040	0.000	723	BB	2.7	
14		0.0146	12.033	0.000	304	BB	3.2	
15		0.2046	12.533	0.000	4261	BB	3.2	
16		2.2479	14.401	0.000	46803	BB	4.0	
17		1.6977	15.643	0.000	35346	BB	4.6	
18		0.1389	16.466	0.000	2892	BB	4.8	
19		0.1653	16.962	0.000	3442	BB	5.4	
20		0.1266	18.357	0.000	2636	BB	5.7	
21		12.0905	20.818	0.000	251732	BB	7.6	
22		0.0561	21.059	0.000	1168	TF	0.0	
23		0.3080	21.252	0.000	6413	TF	0.0	
24		0.4221	21.654	0.000	8787	BV	7.1	
25		0.2624	21.970	0.000	5463	VB	7.1	
26		0.1701	23.745	0.000	3541	BV	7.5	
27		1.8213	24.112	0.000	37921	VB	7.0	
28		0.0412	25.514	0.000	857	BB	11.2	
29		0.1582	26.179	0.000	3295	BV	8.5	
30		0.7104	26.401	0.000	14791	VB	6.9	
31		73.9370	27.763	0.000	1539414	BB	11.7	
32		0.2025	29.374	0.000	4215	BV	6.5	
33		0.0946	29.665	0.000	1970	VB	7.3	
34		0.1856	30.354	0.000	3865	BB	7.6	
35		0.0421	30.755	0.000	877	BV	7.2	
36		0.0206	31.218	0.000	430	VV	8.7	
37		0.0864	31.516	0.000	1798	VV	6.5	
38		0.5357	31.761	0.000	11154	VB	6.3	
39		0.0244	32.052	0.000	508	TS	0.0	
40		0.0512	33.858	0.000	1066	BP	6.5	
41		0.1339	34.182	0.000	2787	PB	6.0	
42		0.0145	36.673	0.000	301	BB	5.3	
43		0.0541	41.708	0.000	1127	BB	6.1	
44		0.0167	45.577	0.000	347	BB	3.9	
45		0.0233	46.839	0.000	485	PB	3.7	
46		0.0147	51.999	0.000	307	VV	2.7	
47		0.0191	52.116	0.000	398	VB	3.0	
48		0.0168	52.376	0.000	350	BB	3.2	
49		0.0694	53.374	0.000	1446	PB	3.9	
50		0.0161	56.416	0.000	335	BB	3.1	
51		0.0162	60.598	0.000	337	BB	3.3	
52		0.0204	60.979	0.000	426	BB	2.5	
53		0.0266	66.875	0.000	553	BV	16.2	
Totals:		100.0000		0.000	2082065			

Total Unidentified Counts : 2082062 counts

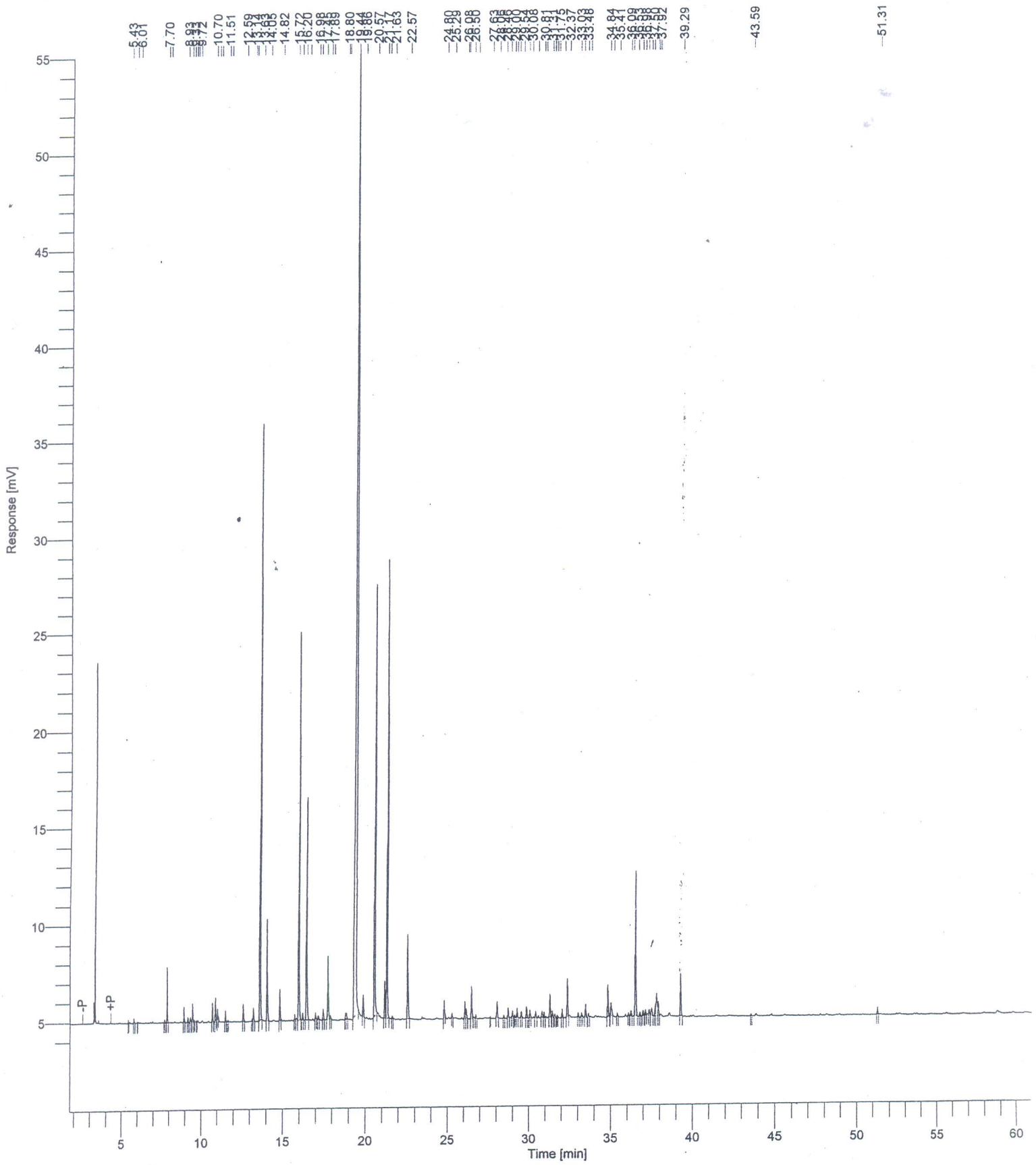
Detected Peaks: 89 Rejected Peaks: 36 Identified Peaks: 0

Multiplier: 1 Divisor: 1 Unidentified Peak Factor: 0

Baseline Offset: -61 microVolts LSB: 1 microVolts



Name : C:\PenExe\TcWS\Ver6.3.2\Examples\cimap\data\JULY_2017\ISS_GERANIUM_27072017_1.raw
 Date : 7/28/2017 10:53:35 AM
 Method : Time of Injection: 7/27/2017 12:04:58 PM
 Start Time : 1.76 min End Time : 61.79 min Low Point : 3.97 mV High Point : 55.04 mV
 Plot Offset: 3.97 mV Plot Scale: 51.1 mV



```

Software Version : 6.3.2.0646
Operator : manager
Sample Number :
Injection Sampler : NONE
Injection Volume : ASXL
Injection Amount : None
Injection Time : 0.00 min
Sampling Rate : 12.5000 pts/s
Injection Volume : 1.000000 ul
Injection Amount : 1.0000
Data Acquisition Time : 7/27/2017 12:04:58 PM

Date : 7/28/2017 10:53:53 AM
Sample Name :
Study :
Rack/Vial : 0/0
Channel : A
A/D mV Range : 1000
End Time : 72.00 min

Area Reject : 0.000000
Dilution Factor : 1.00
Cycle : 1
    
```

```

Raw Data File : C:\PenExe\TcWS\Ver6.3.2\Examples\cimap\data\JULY_2017\SS_GERANIUM_27072017_.raw
Result File : C:\PenExe\TcWS\Ver6.3.2\Examples\cimap\data\JULY_2017\SS_GERANIUM_27072017_.rst [Editing in Progress]
Injection Method : C:\PenExe\TcWS\Ver6.3.2\Examples\cimap\Method\EQUITY_5_EO70_100815 from
Injection File : C:\PenExe\TcWS\Ver6.3.2\Examples\cimap\data\JULY_2017\SS_GERANIUM_27072017_.raw
Injection Method : C:\PenExe\TcWS\Ver6.3.2\Examples\cimap\Method\EQUITY_5_EO70_100815 from
Injection File : C:\PenExe\TcWS\Ver6.3.2\Examples\cimap\data\JULY_2017\SS_GERANIUM_27072017_.rst [Editing in Progress]
Injection Method : C:\PenExe\TcWS\Ver6.3.2\Examples\cimap\Method\EQUITY_5_EO70_100815 from
Injection File : C:\PenExe\TcWS\Ver6.3.2\Examples\cimap\data\JULY_2017\SS_GERANIUM_27072017_.rst [Editing in Progress]
Report Format File : C:\PenExe\TcWS\Ver6.3.2\Examples\cimap\Method\EQUITY_5_EO70_100815.rpt
Sequence File : C:\PenExe\TcWS\Ver6.3.2\Examples\SS_GERANIUM_27072017.seq
    
```

DEFAULT REPORT

Peak #	Time [min]	Area [μV·s]	Height [μV]	Area [%]	Norm. Area [%]	BL	Area/Height [s]
1	5.433	227.09	150.04	0.03	0.03	BB	1.5135
2	5.778	542.91	248.35	0.06	0.06	BB	2.1861
3	6.009	86.39	65.82	0.01	0.01	BB	1.3125
4	7.701	406.05	153.28	0.05	0.05	BB	2.6491
5	7.865	6321.14	2866.20	0.71	0.71	BB	2.2054
6	8.926	1875.84	798.89	0.21	0.21	BB	2.3481
7	9.177	618.04	258.69	0.07	0.07	BB	2.3891
8	9.330	770.61	253.40	0.09	0.09	BV	3.0411
9	9.468	2611.12	951.03	0.29	0.29	VB	2.7456
10	9.568	128.98	80.77	0.01	0.01	BB	1.5969
11	9.716	200.82	94.17	0.02	0.02	BB	2.1326
12	10.702	2431.39	991.55	0.27	0.27	BB	2.4521
13	10.896	2946.63	1164.94	0.33	0.33	BB	2.5294
14	11.030	1143.40	516.91	0.13	0.13	BB	2.2120
15	11.513	1583.39	580.40	0.18	0.18	BB	2.7281
16	11.675	135.90	55.44	0.02	0.02	BB	2.4511
17	12.594	2839.06	896.43	0.32	0.32	BB	3.1671
18	13.136	356.40	145.91	0.04	0.04	BV	2.4427
19	13.222	2113.21	705.91	0.24	0.24	VB	2.9936
20	13.633	95689.53	30849.38	10.70	10.70	BB	3.1018
21	14.047	16116.77	5243.77	1.80	1.80	BB	3.0735
22	14.818	5115.92	1639.96	0.57	0.57	BB	3.1195
23	15.721	722.48	293.32	0.08	0.08	BB	2.4631
24	15.975	61227.03	20011.71	6.85	6.85	BB	3.0596
25	16.202	1007.63	366.09	0.11	0.11	BB	2.7524
26	16.435	39465.00	11492.59	4.41	4.41	BB	3.4340
27	16.980	1013.88	349.62	0.11	0.11	BB	2.9000
28	17.151	714.36	197.23	0.08	0.08	BB	3.6219
29	17.452	1910.73	563.41	0.21	0.21	BB	3.3914
30	17.745	12339.09	3286.61	1.38	1.38	BV	3.7543
31	17.892	542.18	202.30	0.06	0.06	VB	2.6800
32	18.797	1037.73	358.48	0.12	0.12	BV	2.8948
33	18.868	1027.74	341.88	0.11	0.11	VB	3.0061
34	19.439	330503.82	54196.28	36.95	36.95	BB	6.0983
35	19.859	4406.49	1157.62	0.49	0.49	BB	3.8065
36	20.574	82168.84	22277.22	9.19	9.19	BB	3.6885
37	21.166	5887.90	1943.91	0.66	0.66	BV	3.0289
38	21.334	76056.50	23731.36	8.50	8.50	VB	3.2049
39	21.632	477.13	158.21	0.05	0.05	BB	3.0158
40	22.567	15973.21	4357.68	1.79	1.79	BB	3.6655
41	24.804	2590.33	837.70	0.29	0.29	BB	3.0922

7/28/2017 10:53:53 AM Result:
 C:\PenExe\Tc\WS\Ver6.3.2\Examples\cimap\data\JULY_2017\SS_GERANIUM_27072017_.rst

Peak #	Time [min]	Area [μ V·s]	Height [μ V]	Area [%]	Norm. Area [%]	BL	Area/Height [s]
42	25.291	577.74	184.18	0.06	0.06	BB	3.1368
43	26.081	2986.88	901.26	0.33	0.33	BV	3.3141
44	26.172	1915.73	538.55	0.21	0.21	VB	3.5572
45	26.497	6031.05	1669.22	0.67	0.67	BB	3.6131
46	26.760	630.70	194.58	0.07	0.07	BB	3.2414
47	27.626	107.22	57.58	0.01	0.01	BB	1.8621
48	28.058	2994.82	817.68	0.33	0.33	BB	3.6626
49	28.463	522.02	159.20	0.06	0.06	BB	3.2790
50	28.737	1880.62	543.51	0.21	0.21	BB	3.4601
51	28.999	1083.53	344.31	0.12	0.12	BB	3.1470
52	29.124	96.00	54.80	0.01	0.01	BB	1.7518
53	29.280	1394.18	451.17	0.16	0.16	BB	3.0901
54	29.545	957.26	299.22	0.11	0.11	BB	3.1992
55	29.864	2094.95	597.47	0.23	0.23	BB	3.5064
56	30.080	1237.49	382.99	0.14	0.14	BB	3.2312
57	30.429	1304.51	334.86	0.15	0.15	BB	3.8957
58	30.815	1185.86	307.63	0.13	0.13	BV	3.8548
59	30.944	947.26	294.63	0.11	0.11	VB	3.2151
60	31.307	4284.48	1189.35	0.48	0.48	BB	3.6024
61	31.456	1136.41	345.92	0.13	0.13	BB	3.2852
62	31.603	439.62	158.86	0.05	0.05	BB	2.7674
63	31.746	180.85	89.35	0.02	0.02	BB	2.0242
64	32.046	1457.70	448.77	0.16	0.16	BB	3.2482
65	32.372	7117.67	1981.91	0.80	0.80	BB	3.5913
66	33.029	772.67	216.86	0.09	0.09	BB	3.5629
67	33.239	541.60	176.57	0.06	0.06	BB	3.0673
68	33.485	2454.51	666.57	0.27	0.27	BB	3.6823
69	33.670	391.50	156.39	0.04	0.04	BB	2.5033
70	34.837	6218.19	1663.51	0.70	0.70	BB	3.7380
71	35.036	2966.70	685.13	0.33	0.33	BB	4.3301
72	35.405	529.32	175.60	0.06	0.06	BB	3.0144
73	36.092	399.69	155.65	0.04	0.04	BB	2.5679
74	36.241	1007.23	281.97	0.11	0.11	BB	3.5721
75	36.534	28338.78	7411.58	3.17	3.17	BB	3.8236
76	36.798	686.49	216.98	0.08	0.08	BB	3.1639
77	36.982	921.35	275.26	0.10	0.10	BB	3.3472
78	37.145	890.50	279.15	0.10	0.10	BB	3.1900
79	37.350	963.04	301.73	0.11	0.11	BB	3.1917
80	37.500	1860.15	402.56	0.21	0.21	BB	4.6208
81	37.749	1696.73	600.38	0.19	0.19	BV	2.8261
82	37.818	5786.70	1178.28	0.65	0.65	VV	4.9111
83	37.921	2528.89	720.64	0.28	0.28	VB	3.5092
84	39.288	8111.16	2191.75	0.91	0.91	BB	3.7008
85	43.588	273.04	88.79	0.03	0.03	BB	3.0752
86	51.311	1162.43	368.88	0.13	0.13	BB	3.1512
		894397.88	225395.67	100.00	100.00		

Missing Component Report
 Component Expected Retention (Calibration File)

All components were found

GC Report of the essential oils available at CIMAP RC Pantnagar Store

Lemongrass (*Cymbopogon flexuosus*)

Compound	Content (%)
Citral	75.0

Java Citronella (*Cymbopogon winterianus*)

Compound	Content (%)
Citronellal	41.15
Citronellol	13.0
Geraniol	19.4
Citronellyl acetate	2.75
Geranyl acetate	2.45
Elemol	2.35
Limonene	3.85

Palmarosa (*Cymbopogon martinii*)

Compound	Content (%)
Geraniol	78.6
Geranyl acetate	8.4

U Singh
31-7-17
SCIENTIST-IN-CHARGE
प्रभारी वैज्ञानिक
CSIR-CIMAP RESEARCH CENTRE
वै०औ०अ०प०-सीमैप, अनुसंधान केन्द्र
PANTNAGAR (UTTARAKHAND)
पन्तनगर (उत्तराखण्ड)

Menthol-mint (*Mentha arvensis*)

Compound	Content (%)
Menthol	69.05
Menthone	7.85
Isomenthone	5.80
Menthyl acetate	6.15
Limonene	4.30

Peppermint (*Mentha piperita*)


Compound	Content (%)
Menthol	35.5
Menthone	17.0
Isomenthone + Menthofuran	11.4
Menthyl acetate	8.4
1,8-Cineole	7.6
Limonene	3.6

Spearmint (*Mentha spicata*)

Compound	Content (%)
Carvone	54.4

Bergamot-mint (*Mentha citrata*)

Compound	Content (%)
Linalool	44.6
Linalyl acetate	32.0


SCIENTIST-IN-CHARGE 7-17
प्रभारी वैज्ञानिक
CSIR-CIMAP RESEARCH CENTRE
वै०औ०अ०प०-सीमैप, अनुसंधान केन्द्र
PANTNAGAR (UTTARAKHANDI)

Rose-scented geranium (*Pelargonium graveolens*)

Compound	Content (%)
Linalool	14.2
Isomenthone	10.6
Citronellol	29.8
Geraniol	10.2
Citronellyl acetate	5.7
Geranyl acetate	1.4
10-epi- γ -Eudesmol	5.2

Rosemary (*Rosmarinus officinalis*)

Compound	Content (%)
Camphor	26.6
1,8-Cineole	25.1
α -Pinene	14.3
Camphene	7.1
Verbenone	5.1
Limonene	3.3
Borneol	2.0
α -Terpineol	1.9
Bornyl acetate	1.0

Singh
31-7-17
SCIENTIST IN CHARGE
रासायनिक वैज्ञानिक
CSIR-CIMAP RESEARCH CENTRE
पैठोडा-सीमा, अनुसंधान केंद्र
RANTHAGAR (UTTARAKHAND)
पन्तनगर (उत्तराखण्ड)

GC Report of the oil samples received from CRC Bangalore

1. PALMAROSA OIL

Content	Norm.Area [%]
Geraniol	83.10
Geranyl acetate	4.08

2. EUCALYPTUS OIL

Content	Norm.Area [%]
Isopulegol	6.70
Citronellal	63.57
Citronellol	6.39
β -Caryophyllene	2.06

3. CINNAMON OIL

Content	Norm.Area [%]
Eugenol	47.49
Eugenyl acetate	5.81
p-aymene	5.97
Linalool	13.33
(E)-Cinnamaldehyde	2.19

4. ROSEMARY OIL

Content	Norm.Area [%]
α - pinene	14.69
Camphene	7.07
β -pinene	4.06
Limonene+ β -phellandrene	6.35
1,8- Cineole	22.14
Camphor	22.37

5. CITRONELLA OIL

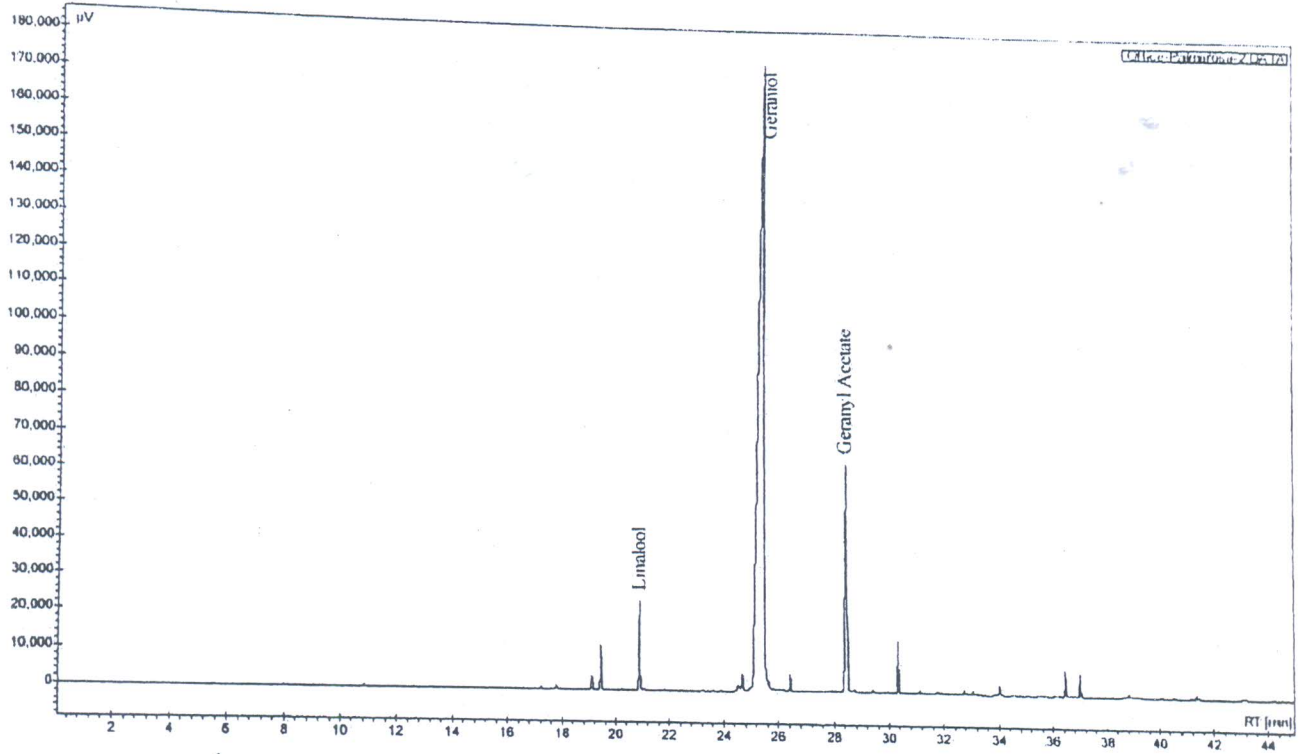
Content	Norm.Area [%]
Limonene	3.29
Linalool	0.84
Isopulegol	1.71
Citronellal	41.40
Citronellol	12.19
Geraniol	17.63
β -Caryophyllene	2.34
δ -Cadinene	1.86
Elemol	2.45

6. LEMONGRASS OIL

Content	Norm.Area [%]
Neral	29.52
Geraniol	7.90
Geranial	39.31

Chromatogram

Sample: Palmarosa oil



Report

S. No	Component	Area % [%]
1	Linalool	2.80
2	Geraniol	78.02
3	Geranyl Acetate	10.41

